

DISPLAY HOME
FOR SALE

ARDEN

Step up to more space, style and light.



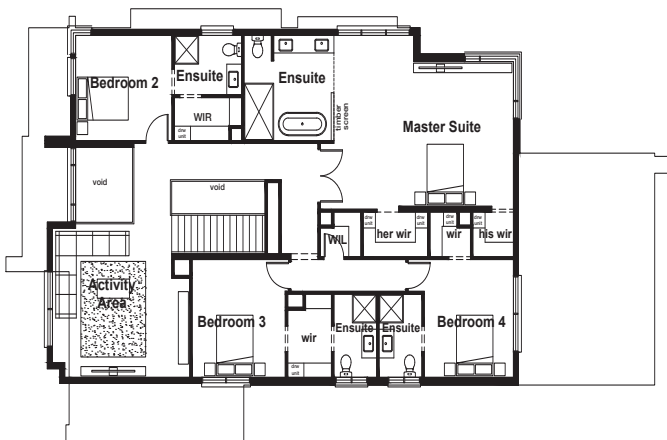
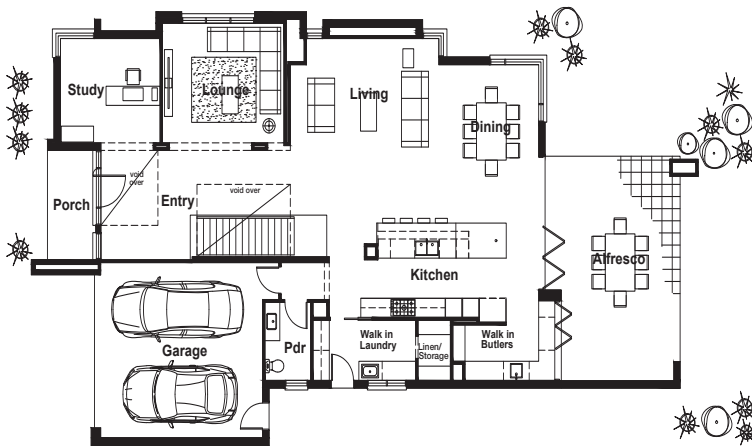
4 2 4

Corner Westwood
Boulevard & Alderberry Rd
Keysborough

Bespoke Display Home

\$1,520,000*

*5% return. Terms of leaseback to be negotiated.



- Architect designed
- Smeg European appliance centre
- Oversized kitchen with stone benchtops
- Stone benchtops to ensuite and bathrooms
- Bi-fold door to alfresco
- Bi-fold window to butlers pantry
- Porcelain floor tiles
- Quality carpet
- Refrigerated cooling
- Cbus lighting system
- Wide pivot entry door and entry void
- Internal fixtures and fittings as displayed (ex furniture)
- Fully landscaped

Contact:

Jackie Cavner 0403 031 290

Gina Granger 0488 070 944

* Price subject to change without notice. 5% return terms on leaseback to be negotiated. Effective 3 February 2017.

ardenhomes.com.au

ARDEN

Step up to more space, style and light.